

# MORILLON



## SKI LESSONS

| SKI SCHOOL ESF  | Adults + Children (4-15) | Competition | Cost of medal is included for children |
|---|--------------------------|-------------|--|
| <b>Lessons only; lift pass not included</b>   |                          |             |  |
| 6 half-days Ski   | £155                     | £190        |  |
| 6 half-days Snowboard (+8yrs)* - Beginners + Level 1  | £155                     | n/a         |  |
| 6 half-days Snowboard Levels 2+3 (+12yrs)**   |                          | n/a         |  |
| <b>SKI for Kindergarten, Children (4-15) &amp; Adults</b> 19/12-31/12: 9.15-11.30 or 14.00-16.15 - 2/1-4/2 + 6/3-15/4: Sun 14.30-17.00, then Mon-Fri 9.30-12.00 - 6/2-4/3: 10.00-12.15, 14.55-17.10 - <b>SKI COMPETITION</b> (Only 19/12-31/12 + 6/2-4/3): 9.15-12.15 |                          |             |  |
| <b>SNOWBOARD (+8yrs) *BEGINNERS/LEVEL 1:</b> 19/12-31/12: 14.00-16.15, 6/2-4/3: 9.15-12.15, Other dates: 09.30-12.00 <b>**LEVELS 2-3:</b> 19/12-25/12: 14.00-16.15, 27/12-31/12 13.15-16.15 + 6/2-4/3: 9.15-12.15   |                          |             |  |
| <b>ALL TIMES TO BE CONFIRMED AND SUBJECT TO CHANGE</b>  |                          |             |  |
| Please note that a booking fee of £9 per party will apply -   |                          |             |  |

All times to be confirmed, subject to changes. PLEASE NOTE: a booking fee of £9 per party will apply

**Important note:**

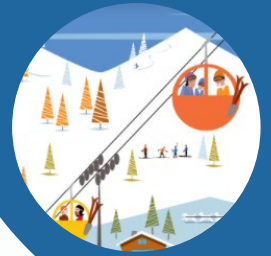
Please note that lesson times are subject to change right until the last minute. Outside French school holidays the ski school reserves the right to cancel group lessons should numbers be insufficient. For peak periods (18/12-2/1, 5/2-4/3 & 2/4-22/4) we strongly recommend that you book as early as possible and in any case at least 6 weeks prior to the required dates. Morning lessons tend to get booked up first and therefore we may only be able to offer afternoon classes within 6 weeks of departure. In some resorts English speaking instructors may not always be available, particularly at peak times.

## LIFT PASSES

| <b>Grand Massif LIFT PASS</b>  |   |        |                       |          |
|--|---|--------|-----------------------|----------|
| (265km of pistes covering Les Carroz, Samoens, Flaine, Morillon, Sixt)   |   |        |                       |          |
|  | 6 days  | 7 days | SPECIAL OFFER* 6 days |          |
|  |   |        | 9/1-21/1              | 19/3-1/4 |
| Adult (16-64yrs)   | £239  | £278   | £203                  | £227     |
| Child (5-15)   | £180  | £210   | £153                  | £171     |
| Senior (65-74yrs)  | £227  | £265   | £193                  | £215     |
| Child (under 5) & Senior (75+)   | Free<br>(Proof of age is compulsory; please bring ID when collecting lift-passes) |        |                       |          |
| <b>PLEASE NOTE: €2/pass for hands-free pass included in price (hands free pass can be re-used annually)</b>  |   |        |                       |          |
| Please note: there is also a cheaper lift pass called Massif covering only Samoens, Morillon and les Carroz although we cannot pre-book this. Beginners are advised to buy this pass in resort (c€199 for 6 days). |   |        |                       |          |
| Your hands-free lift pass cards will be sent to you in your voucher pack, so you won't have to queue at the lift pass office with a voucher on arrival.  |   |        |                       |          |



# SKI/BOARD EQUIPMENT HIRE



| <b>**7 days for the price of 6**</b>                           |                     | <b>*HIGH SEASON</b> | <b>**LOW SEASON</b> | <i>Resort 6 days</i> |
|--|---------------------|---------------------|---------------------|----------------------|
| <b>B-SUPERIOR CARVER</b>                                       |                     |                     |                     |                      |
| RSB  | Skis, poles & Boots | £87                 | £77                 | € 129                |
| RSO  | Skis & poles Only   | £64                 | £54                 | € 97                 |
| RBB  | Snowboard & Boots   | £87                 | £77                 | € 129                |
| RBO  | Snowboard Only      | £64                 | £54                 | € 97                 |
| <b>C-PERFORMANCE CARVER</b>                                    |                     |                     |                     |                      |
| NSB  | Skis, poles & Boots | £109                | £97                 | € 152                |
| NSO  | Skis & poles Only   | £83                 | £73                 | € 114                |
| NBB  | Snowboard & Boots   | £109                | £97                 | € 152                |
| NBO  | Snowboard Only      | £83                 | £73                 | € 114                |
| <b>D-PRESTIGE CARVER</b>                                       |                     |                     |                     |                      |
| PSB  | Skis, poles & Boots | £121                | £108                | € 170                |
| PSO  | Skis & poles Only   | £92                 | £81                 | € 128                |
| <b>JUNIOR FUN CARVER (3-6yrs) - Max child height 1.20m</b>     |                     |                     |                     |                      |
| CBSB   | Skis, poles & Boots | £42                 | £40                 | € 50                 |
| CBSO   | Skis & poles Only   | £32                 | £29                 | € 38                 |
| <b>JUNIOR FUN CARVER (7-13yrs) - Max child height 1.60m</b>    |                     |                     |                     |                      |
| CBSB   | Skis, poles & Boots | £54                 | £42                 | € 65                 |
| CBSO   | Skis & poles Only   | £39                 | £31                 | € 49                 |
| <b>JUNIOR SPORT CARVER (7-13 yrs) - Max child height 1.60m</b> |                     |                     |                     |                      |
| CRSB   | Skis, poles & Boots | £67                 | £55                 | € 92                 |
| CRSO   | Skis & poles Only   | £49                 | £40                 | € 69                 |
| <b>JUNIOR SNOWBOARD (9-13yrs) - Max child height 1.60m</b>     |                     |                     |                     |                      |
| CSBB   | Snowboard & Boots   | £67                 | £55                 | € 92                 |
| CRBO   | Snowboard Only      | £49                 | £40                 | € 69                 |
| <b>HELMET</b>  |                     |                     |                     |                      |
| Child (3-13yrs) / Adult  |                     | £18 / £21           |                     | € 19 / € 22          |

\*HIGH SEASON: 25/12/21-31/12/21 + 5/2/22-4/3/22 - \*\*LOW SEASON: OTHER DATES

Resort price is when not pre-booked via Peak Retreats

## SPECIAL OFFERS

- Free Skis/snowboard & boots (Superior Carver) for party leaders of groups of 10 or more all taking equipment.
- 1 Free helmet per child aged 6 and under for every adult booking skis or snowboards & boots (must be under same booking reference and requested on form above)
- BOOK a B or C ADULT PACK (skis/boots) BEFORE 15/11/21 and get a FREE Child Fun Pack (CBSB) including helmet - Valid for weeks 1/1, 8/1, 15/1, 22/1, 19/3, 26/3 + 2/4





# SKI/BOARD EQUIPMENT CATEGORIES

To ensure you always get the best experience on the slopes, we have 3 categories of ski and 2 categories of snowboard for adults; and 2 categories of skis and 1 category of snowboard for children.

## **SUPERIOR CARVER – Cat. B**

Great modern equipment offering the perfect balance of enjoyment between easy and more challenging skiing in safety on any type of snow, mainly on piste.

These all-rounder skis are flexible enough to turn easily and guarantee stability whilst forgiving your weaknesses; they are thus ideal for building confidence and improving your skiing

*Our tip: for recreational to good skiers looking for comfort and control and seeking new thrills*

## **Lady SUPERIOR CARVER – Cat. B**

Skis with a refined design: the wide tip makes turning easy, enabling women to ski in comfort and to combine fun with progression.

## **SUPERIOR SNOWBOARD – Cat. B**

Designed for recreational to good boarders seeking excellent behaviour for all-mountain adventures

---

## **PERFORMANCE CARVER – Cat. C**

Superbly responsive equipment suitable for experienced skiers who can fully appreciate the special features that each type of ski can provide: all mountain, freeride, freestyle, advanced piste skis.

Excellent grip, precise ski control on steep slopes, stability at higher speeds on harder snow, great kick and manoeuvrability on ungroomed snow

*Our tip: for keen skiers looking to master technique and in search of new challenges*

## **Lady PERFORMANCE CARVER – Cat. C**

These precise and comfortable skis are adapted to a woman's physique, offering excellent grip and manoeuvrability

## **PERFORMANCE SNOWBOARD – Cat. C**

Designed with confident boarders in mind, capable of taking full advantage of any terrain and conditions.

---

## **PRESTIGE CARVER – Cat D**

Top-end equipment, offering a choice between this season's models and next season's test skis for powder, free ride and expert piste skiing.

*Our tip: Skis offering both technology and style – ideal for thrill-seekers. You are an advanced skier and you simply want the best around!*

## **Lady PRESTIGE CARVER – Cat D**

Piste or off piste skis designed for expert or demanding women skiers.

---

## **JUNIOR FUN CARVER**

Stable skis and comfortable boots for easy progress

*Our tip: recommended for children who are either beginners or have already tried skiing.*

## **JUNIOR SPORT CARVER**

Offering greater control of speed on all terrain with more precision and performance to perfect skiing technique

*Our tip: Top of the range juniorski, suitable for intermediate to expert young skiers.*

## **JUNIOR SNOWBOARD**

Versatile board for riders of most levels.

Snowblades are charged as per Superior Carver

**We strongly recommend that all skiers and boarders wear a helmet!**

## **PLEASE NOTE**

Our extras ££ prices are calculated at the exchange rate that applies when the calculations are done. We cannot always guarantee that prices will be cheaper than in resort but you can be assured that if the pound depreciates, you will not be charged more for your equipment, lift passes and ski lessons up until 30 November, enabling you to budget for every element of your holiday at the time of booking your accommodation. Once you have booked any extras with us you are guaranteed that their price won't increase.

